

A150 POWER AMPLIFIER

150 Watts RF Power For:

- Ultrasonic
- Testing
- Laboratory Use



Featuring:

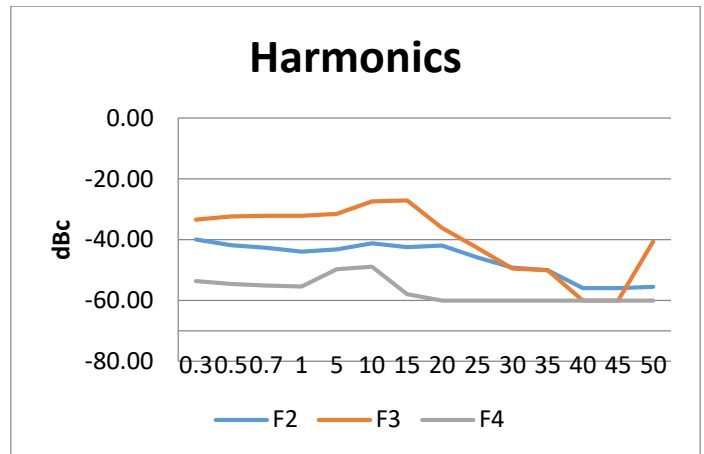
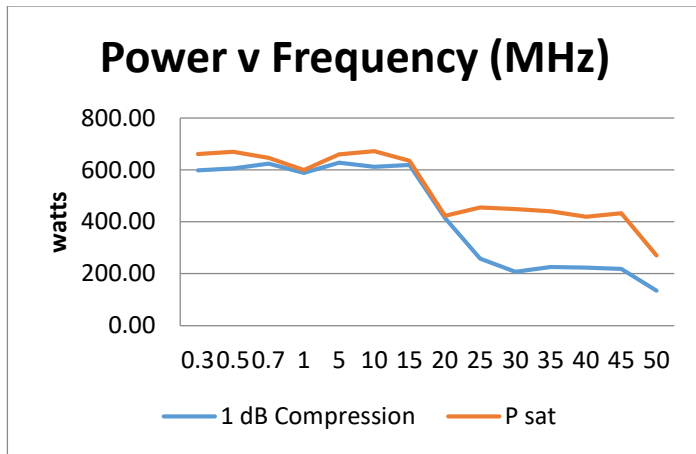
- 300 KHz – 35 MHz
- Power Measurement
 - Forward & Reflected
- Instantaneous Bandwidth
- Solid State Reliability
- Forced Air Cooling

E&I A150 Specifications

Class of Operation:	Class A
Frequency Coverage:	300 KHz – 35 MHz
Rated Power:	150 Watts P1dB
Saturated Power:	250 Watts
Power Gain:	55 dB nominal
Gain Flatness:	+/- 1.5 dB
Input Power for Rated Pout:	0.5 mW Max
Input Impedance / VSWR:	50 Ω / 1.5:1 maximum
Output Impedance / VSWR:	50 Ω / 2:1 maximum
Harmonic Level:	< -25dBc @ 150 Watts
Ruggedness:	∞:1 VSWR
Stability:	Unconditional into any passive load
Protection:	Unit will withstand input signal of +13 dBm without damage (1.0 V rms) max.
Third Order Intercept:	IP3 ~ 60 dBm
AC Input:	100 – 240 Volts 47 – 63 Hz 8.8 A @ 120 V 4.4 A @ 240 V
Temperature Range:	0° – 40° C
Cooling:	Forced Air
Dimensions (H x W x D):	5.3 x 16.5 x 18.4 inches 134.5 x 420 x 467 mm
Weight:	48 lbs (21.8 kg)
Connectors:	BNC
Rack Mounting:	Optional
RF Input Signal:	AM, FM, SSB, Pulsed



A150 POWER AMPLIFIER



Protection:

- Software Overdrive Limit: 250 Watts
- Software Reverse Power Limit: 200 Watts

Performance into 50 ohms

Input				Amplifier Gain Nominal dB	Output			
Input Power Watts	dBm	V p-p Volts	V rms Volts		Output Power dBm	Watts	V p-p Volts	V rms Volts
0.000079	-11.02	0.18	0.06	55	43.98	25.00	100.00	35.36
0.0003	-5.00	0.36	0.13	55	50.00	100.00	200.00	70.71
0.0005	-3.24	0.44	0.15	55	51.76	150.06	245.00	86.62
0.0006	-1.98	0.50	0.18	55	53.02	200.22	283.00	100.06



Electronics & Innovation, Ltd.
 150 Research Blvd.
 Rochester, NY 14623
 Tel: 585-214-0598 / Fax: 585-214-0580
 www.eandiltd.com