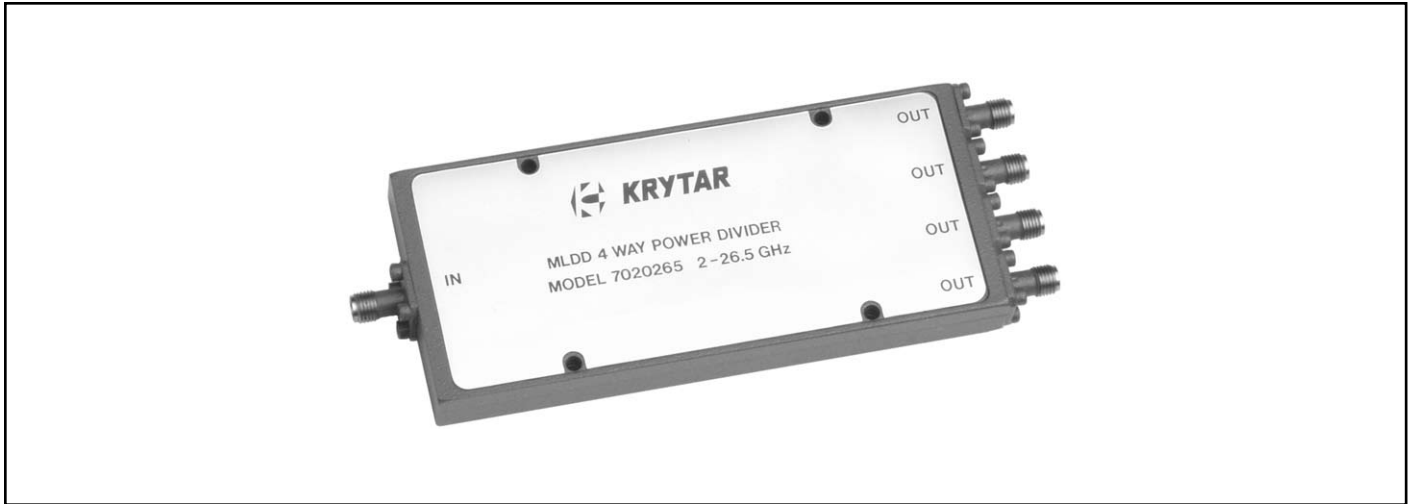




KRYTAR[®]

**MODELS 7005265, 7010265 & 7020265
MLDD 4-WAY POWER DIVIDERS
0.5-26.5, 1.0-26.5 & 2.0-26.5 GHz**



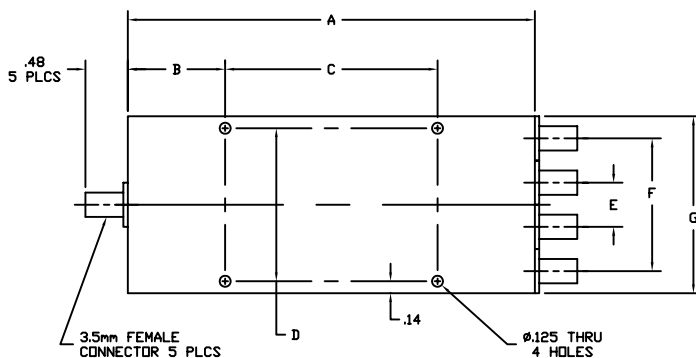
MLDD signifies Matched-line Directional Divider, a new class of microwave directional devices invented and patented by Tom Russell.

SPECIFICATIONS

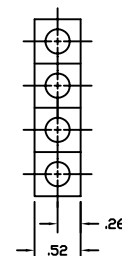
FREQUENCY RANGE (GHz)	MODEL	INPUT VSWR	OUTPUT VSWR	INSERTION LOSS (dB)	ISOLATION (dB)	MAXIMUM AMPLITUDE TRACKING (dB)	MAXIMUM PHASE TRACKING (deg.)	WEIGHT (ounces)
0.5 - 26.5	7005265	1.8	1.7	4.3	> 16	1.2	15	17
1.0 - 26.5	7010265	1.9	1.7	3.3	> 16	1.0	15	10
2.0 - 26.5	7020265	1.9	1.7	2.3	> 16	1.0	15	8

Amplitude and phase tracking are the ratio of one output to the other in dB or degrees respectively. Input power rating is 10 watts with 2:1 load VSWR's.

DIMENSIONS



MODEL	A	B	C	D	E	F	G
7005265	8.00	1.25	5.500	2.330	1.10	2.10	2.60
7010265	4.50	1.10	2.300	2.330	1.10	2.10	2.60
7020265	4.60	1.10	2.400	1.730	0.50	1.50	2.00



1288 Anvilwood Ave. • Sunnyvale, CA 94089 • (408) 734-5999 • FAX: (408) 734-3017
Toll Free 1 (877) 734-5999 • www.krytar.com