

Phase Shifters

Adapters Attenuators Couplers

DC Blocks

Detectors

Isolators & Circulators

Phase Shifters

Power Dividers and Hybrids

Terminations (50 Ohm Loads)

Waveguide

Type N (F) 1 to 12.4 GHz 200W Precision Control Phase Shifters



Features

- Broadband Coverage - 180° Phase Shift at Minimum Frequency
- Low VSWR
- +/- 0.5°/GHz Accuracy with Digital Dial Readout

Models

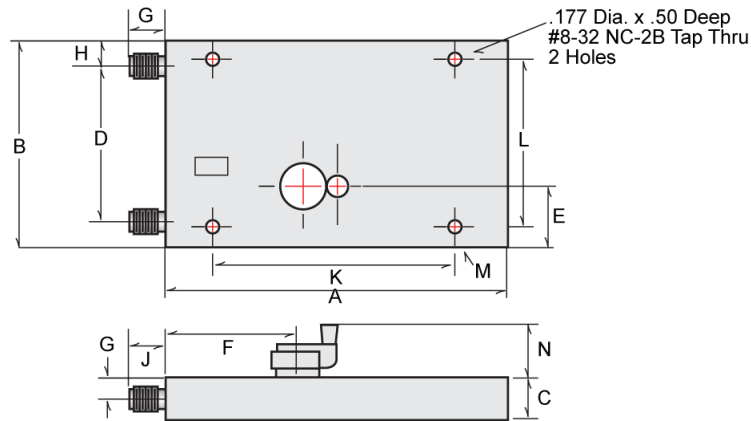
- 3752, 3753B

Model	3752	3753B
Low Frequency (GHz)	1.0	3.5
High Frequency (GHz)	5.0	12.4
Minimum Phase Shift	180 Deg. at 1 GHz	180 Deg. at 3.5 GHz
Average Power (W)	200	200
Peak Power (kW)	5	5
Insertion Loss dB (max)	0.5	0.7
VSWR (max)	1.25	N/A
VSWR (Max) 3.5-10 GHz	N/A	1.35
VSWR (max) 10-12.4 GHz	N/A	1.4
Accuracy (in Deg./GHz)	+/-0.5	+/-0.5
Weight (max) in lbs	4.5	3.3
Weight (max) in kg	2.05	1.5

Phase Shifters

Adapters Attenuators Couplers DC Blocks Detectors Isolators & Circulators **Phase Shifters** Power Dividers and Hybrids Terminations (50 Ohm Loads) Waveguide

Type N (F) 1 to 12.4 GHz 200W Precision Control Phase Shifters



Outline Drawings For Models : 3752, 3753B

Units	A	B	C	D	E	F	G	H	J	K	L	M (Dia.)	N
3752													
in.	9.03	5.53	1.12	4.13	1.56	3.75	0.56	0.68	0.75	6.00	5.13	0.177	1.50
mm	229.36	140.46	28.45	104.90	39.62	95.25	14.22	17.27	19.05	152.40	130.30	4.496	38.10
3753B													
in.	6.72	4.69	1.28	3.50	1.59	1.13	0.75	0.58	1.22	4.50	4.31	0.177	1.50
mm	170.69	119.13	32.51	88.90	40.39	28.70	19.05	14.73	30.99	114.30	109.47	4.496	38.10

Notes:

All dimensions are max. unless otherwise specified.