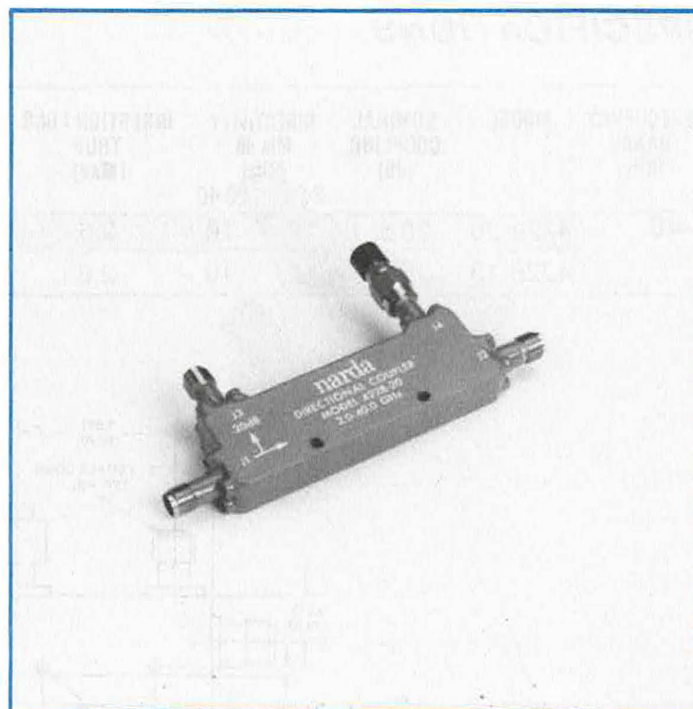


MILLIMETER WAVE ULTRA BROADBAND COUPLERS

DESCRIPTION

New catalog millimeter wave couplers cover the 2 to 40 GHz frequency range in a single unit. Model 4228-20 is a 20 dB version. A 13 dB model is available with 2.4 mm connectors and 2.9 mm ('K*') connectors on a special-order basis.

Models 4228-20 and 4228-13 further complements the industry's most extensive line of couplers.



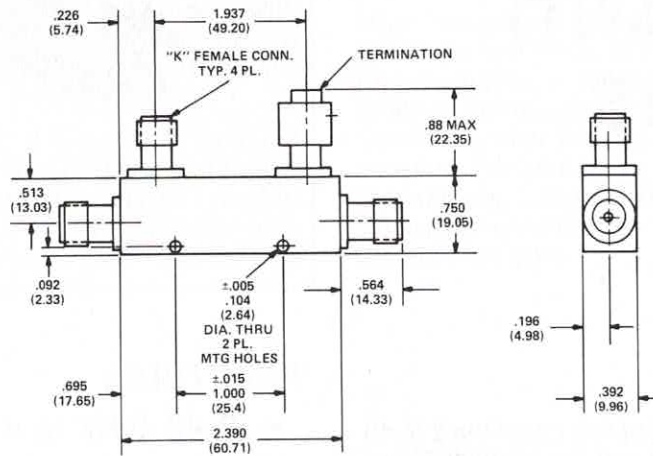
FEATURES

- 2-40 GHz in a single package
- Small size
- Lightweight
- 2.9 mm ('K*') or 2.4 mm Connector Versions available

Couplers

SPECIFICATIONS

FREQUENCY RANGE (GHz)	MODEL	NOMINAL COUPLING (dB)	DIRECTIVITY		INSERTION LOSS TRUE (Max)	VSWR		FREQUENCY SENSITIVITY (dB) Max	POWER (Watts)		WEIGHT	
			Min dB	(GHz)		PRIMARY LINE Max	SECONDARY LINE Max		AVERAGE	PEAK	Oz	Grams
2-40	4228-20	20 ± 1	12	26-40	2.6	2.0	2.0	±1.25	20	3	1.9	55
	4228-13	13 ± 1	12	10	2.6	2.0	2.0	±1.25	20	3	1.9	55



MODELS 4228-20, 4228-13

Allow .020 max per surface for sealant buildup.